

Goal

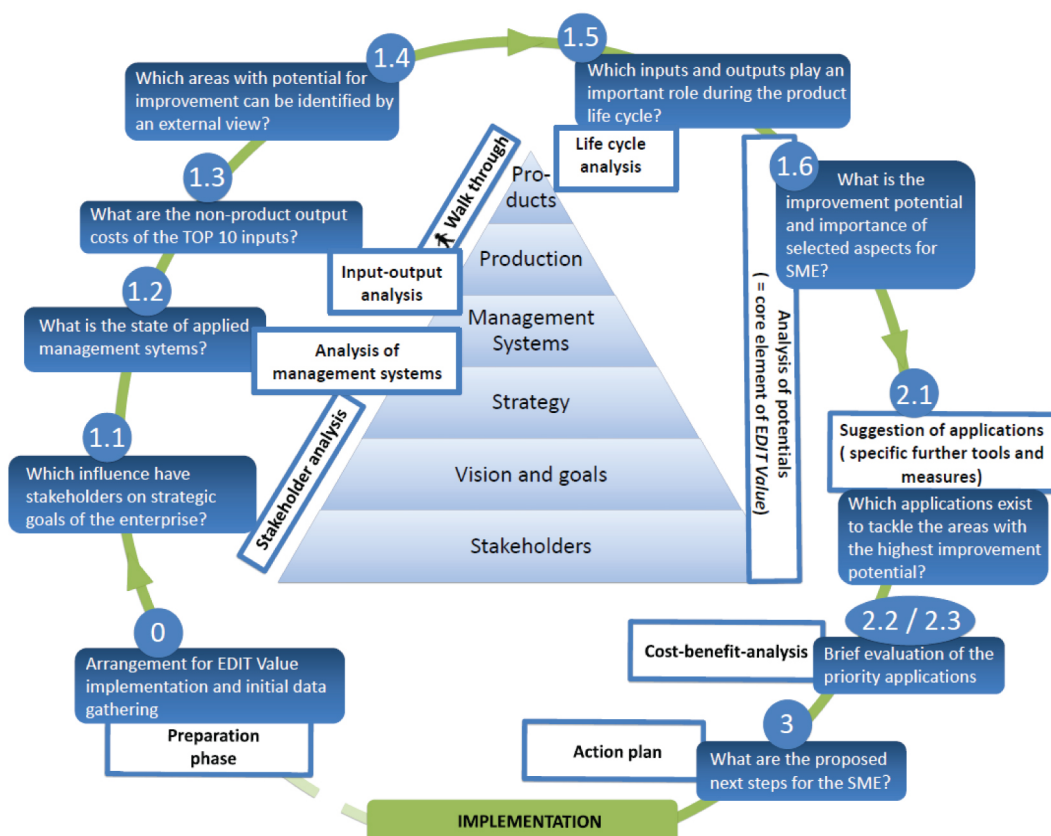
EDIT Value identifies the most effective opportunities for improving resource efficiency and overall sustainability performance in small and medium-sized enterprises (SMEs) within given framework conditions.

The tool enables a company to choose the most effective leverage points and feasible applications leading both to an improvement of resource efficiency and to an optimised allocation of limited resources. With the help of EDIT Value all levels of an enterprise (from stakeholders to products, see management pyramid below) are assessed in a systematic way.

Benefits

- Double benefits from innovation projects: costs savings and reduction of environmental risks
- Identification of most promising areas for improvement
- Allocation of potential applications (specific tools) driven by the company's needs
- Better control over strategic risks and opportunities of enterprises
- New view on business effectiveness and efficiency
- Involvement of staff in continuous improvements in enterprise performance

The EDIT Value Process



PRESOURCE is funded by the European Union's CENTRAL EUROPE Programme and aims at increasing resource efficiency, especially in small- and medium-sized enterprises (SMEs) in Central European countries by identifying opportunities for improving and financing investments in eco-innovation.